

Tywi Valley Open Studios **ARTS TRAIL 2025**

29 ARTISTS • 15 MILE RADIUS OF LLANDEILO
JULY/GORFF 26-3 AUG/AWST



Stiwdios Agored Dyffryn Tywi **LLWYBR GELF 2025**

29 O ARTISTIAID • TALGYLCH 15 MILLTIR O LANDEILO
FREE STUDIO GUIDE • LLYFRYN STIWDIOS AM DDIM

INTRODUCTION

Welcome to the eleventh year of the Tywi Valley Open Studios Arts Trail. This year there are 29 artists and craftspeople opening their studios and homes to the public, free of charge for 9 days between 26th July – 3rd August.

This is a wonderful opportunity to explore an area that in the past few years has become home to one of the highest concentrations of artists living and working in Wales.

During the week not only will you be delighted by the huge variety of work being made on your doorstep in the Tywi Valley but you will have a chance to discover how artists work, have a chat to them and even have a go yourself in one of the many workshops available during the week.

There is a taster of what the workshops will be offering on the Studio Workshops pages within this guide but full dates, times and information for these can be found at www.tywivalleyopenstudios.wales



CYFLWYNIAD

Croeso i unfed flwyddyn ar ddeg Taith Gelf Stiwdios Agored Dyffryn Tywi. Eleni mae 29 o artistiaid a chreffftwyr yn agor eu stiwdios i'r cyhoedd, yn rhad ac am ddim, am 9 diwrnod rhwng 26ain Gorffennaf – 3ydd Awst.

Mae hwn yn gyfle gwyh i archwilio ardal yng Nghymru ble mae crynodiad uchel o artistiaid wedi ymgartrefu a gweithio.

Byddwch yn siŵr o gael eich plesio gyda'r amrywiaeth o waith celf sydd yn cael ei gynhyrchu yn ardal Dyffryn Tywi. Yn ystod yr wythnos cewch gyfle i ddarganfod sut mae'r artistiaid yn creu eu gwaith drwy gael sgwrs a'u gweld wrth eu gwaith. Cewch gyfle i gael tro eich hun yn un o'r gweithdai a fydd yn cael eu cynnal yn ystod yr wythnos.

Gweler y tudalennau Gweithdai Stiwdio yn y canllaw i gael rhagflas o'r hyn sydd ar gael, ond mae dyddiadau llawn, amseroedd a gwybodaeth ar gyfer y rhain i'w cael yn www.tywivalleyopenstudios.wales



How to use this guide:

The artists have all been given a studio number which corresponds with the numbers on the map in the fold out section of this guide. We have also colour coded the artists' disciplines for visual indication of what each artist does. There is a key below for this which includes the symbols used indicating facilities at each studio.

There is a summary about each artist in this guide with brief directions. Find extended details of each artist and the work they do and full directions plus all the opening times of each studio on our website at www.tywivalleyopenstudios.wales

Remember that studios aren't always open throughout the whole nine days of the Arts Trail and opening times may vary. Please check the studios you want to visit are open and at what time on our website before starting your journey.

Please be aware that satnavs in rural areas can be a bit hit and miss. Visiting the studios and participating in workshops is undertaken at your own risk.



Sut i ddefnyddio'r canllaw hwn:

Mae pob artist wedi cael rhif stiwdio sy'n cyfateb i'r rhifau ar y map yng nghanol yr arweinyfr hwn. Rydym hefyd wedi rhoi codau lliw i ddisgyblaethau'r artistiaid i rhoi arwydd gweledol o'r hyn y mae pob artist yn ei wneud. Mae yna allwedd ar gyfer hyn, yn cynnwys y symbolau a ddefnyddiwyd sy'n nodi'r cyfleusterau ym mhob stiwdio.

Mae crynodeb am bob artist yn y canllaw hwn gyda chyfarwyddiadau byr. Dewch o hyd i fanylion estynedig pob artist a'r gwaith y maent yn ei wneud a chyfarwyddiadau llawn ynghyd â holl oriau agor pob stiwdio ar ein gwefan yn www.tywivalleyopenstudios.wales

Cofiwch nad yw stiwdios bob amser ar agor trwy gydol naw diwrnod cyfan y Llwybr Celf a gall oriau agor amrywio. Gwiriwch ddyddiadau ac amseroedd agor y stiwdios ar ein gwefan cyn cychwyn ar eich taith.

Cofiwch fod Sat Navs yn gallu creu trafferthion mewn ardaloedd gwledig! Mae ymweld â'r stiwdios a chymryd rhan yn y gweithdai yn eu gwneud ar risg eich hun.



Bron Jones workshop

KEY FOR SYMBOLS



Toilet
Toiled



Parking
Parcio



Wheelchair
Friendly
Addas i
Gadair Olwyn



Stairs
Grisiau



Workshops
Gweithdai



Welsh Speaker
Siaradwr Cymraeg



Learner of Welsh
Dysgwr Cymraeg



Studio visits at other times also
available by appointment

ALLWEDD LLIWIAU A SYMBOLAU



Textiles
Tecstilau



Painting
Paentiaidau



Drawing & Print
Darlunio & Argraffu



Wood
Pren



Glass & Ceramics
Gwydr & Serameg



Sculpture
Cerflunwaith



Mixed Media
Cvfrvnqau Cymvsa



Bookbinding
Rhwymo llyfrau

29 STUDIOS TAKING PART IN THIS YEAR'S TYWI VALLEY OPEN STUDIOS ARTS TRAIL

29 O STIWDIOS YN CYMRYD RHAN ELENI MEWN LLWYBR GELF STIWDIOS AGORED DYFFRYN TYWI



1 DIETER & PHILIPPA RÄDER – BOOKBINDING

Ynyswen, Nantgaredig, Carmarthen, SA32 7PG

What 3 words location: ///grazed.stole.cello

m 07534 456786

e info@dpbindery.com w dragonpressbindery.com

f dpbindery i dragonpressbindery

A traditional craft hand bookbinding, book conservation-restoration, and letterpress printing studio. Visitors will find out about materials, equipment and techniques we use as well as see some brief demonstrations.

Open
Weekends
10-5
Weekdays
11-4
Closed
Wednesday.

Directions: From the A40 at Nantgaredig, take the B4310 north towards Brechfa. In Felingwmisaf, turn sharp right downhill shortly after passing the “Croeso/Welcome” sign. Follow this lane up, down and round for 1.7 miles until you see our gateway on the right marked “Ynyswen” and “Dragon Press Bindery”. Drive in and park on the left before the yellow house; follow arrows to the studio in outbuildings to the rear. Do not go into the farm next door. There are other routes: online/app directions to the postcode are usually reliable.



2 JUSTINE & ALAN BURGESS - WOOD

The Mill, Gwernogle, Carmarthen, SA32 7SA

What 3 words location: /// flick.pity.focal

m 01267 202309

e info@westwaleswillows.co.uk w www.westwaleswillows.co.uk

f @westwaleswillows i @westwaleswillows

We are willow weavers, tutors and growers. Our studio and willow fields are located in a beautiful valley near Brechfa. A range of baskets will be on display.

Open
10 – 4 except
Sun 11-4
Mon/Tue/
Wed closed

Directions: From the A40 at Nantgaredig, take the B4310 to Brechfa. Half a mile after passing through the village of Brechfa, turn left off the B4310 towards Gwernogle, passing the chapel and the old Post Office on the right-hand side. Take the first turning on the right - this has a no through road sign spray painted with a smiley face! The Mill is the first house on the right and parking is across the road on the left. Steep track to enter field.



3 AMANDA STONE – MIXED MEDIA

3 Rhydygarn, Llansawel, SA19 7JF

What 3 words location: ///pronouns.rank.retail

m 07919 497952 e amanda.stone@hotmail.co.uk

i amanda_art

I use a variety of media and techniques to respond to the world around me.

Directions: From Llandeilo follow the signs for the A40 Llandovery. Turn left onto the B4302 towards Talley. After 7 miles turn left onto the B4337 towards Llansawel. Continue into the village, cross the bridge, as the road bends left, Rhydygarn is on the right.

Open
10am-5pm
Every day





4 DEBORAH SHAH-SMITH – TEXTILES

Cwm Einon Fawr, Pumsaint, Llanwrda, Carmarthenshire, SA19 8BX

What 3 words location: ///dust.utensil.gradually

m 07535 801051 e mopanibean@gmail.com

w mopanibean.co.uk f MopaniBeans i mopani_bean

Open
10am - 4pm
closed
Wednesday

Welsh tweed is largely a forgotten fabric. By up-cycling vintage Welsh tweed into contemporary designs I aim to breathe new life into these fabrics, and introduce them to modern audiences.

Directions: From Llandeilo take A40 north, then B4302. At T junction with A482 turn left. Pass 2 farms on left and turn left immediately after second farm. Follow road past Ffrwdal House then turn right up hill. At top of the hill turn left and take the right hand track signed as a dead end and bridleway. Keep left on this track until you reach Cwm Einon Fawr. Park by gate labelled 'Stables'.



5 ANGELA FARQUHARSON - SCULPTURE

Exhibiting with Martin Duffy

The Old Post Office, Ffarmers, Llanwrda, Carm. SA19 8LQ

What 3 words location:/// referral.refills.slope

t 01558 650183 m 07708 938136 e angelifarquharsonsculpture1@outlook.com

w farquharsonduffysculpture.com

Open
11am-5pm
Every day

I have been a professional figurative sculptor since 2000. Creating sculptures, for both indoors and outdoors. My sculptures are created in a range of materials including ceramic, bronze, resin and steel.

Directions: Turn right for Ffarmers off the A482, which is just after the hill 2 - 3 miles after Pumsaint. Follow the road into the centre of the village. The house & studio are opposite Drovers Arms pub. The entrance

is to the side of the house, through the large gates.



6 MARTIN DUFFY - SCULPTURE

Exhibiting with Angela Farquharson

The Old Post Office, Ffarmers, Llanwrda, Carm. SA19 8LQ

What 3 words location: ///sharpness.kingpin.deflate

t 01558 650183 m 07988 207924 e farsculpt@tiscali.co.uk

w farquharsonduffysculpture.com

Open
11am-5pm
Every day

Martin has been a professional sculptor for nearly 30 years and has built an international reputation for his beautiful figurative sculptures. There will be a range of new large and small work on show.

Directions: Turn right for Ffarmers off the A482, which is just after the hill 2 - 3 miles after Pumsaint. Follow the road into the centre of the village. The house & studio are opposite Drovers Arms pub. The entrance

is to the side of the house, through the large gates.



7 GABRIEL HUMMERSTONE – MIXED MEDIA

The Barn, Henllys Estate B&B, Cilycwm, Llandovery, SA20 0EW

What 3 words location: ///charmingly.chaos.beard

m 07805 694016 e gabriel@hummerstone.wales

w hummerstone.wales f gabriel hummerstone i gabrielhummerstone

Open
11am - 6pm
Every Day

I am inspired by the C18th Delabole slate headstones of N Devon to carve letters on gravestones. House signs/inscriptions. Lino cuts and pen and ink lettering of the Psalms.

Directions: From Llandeilo A40. Turn left before bridge into Llandovery; Drive half a mile, bear left at the junction. Continue half a mile until the road bends

sharply left and uphill (just where there is a right hand turn to Cilycwm) then take the very next left, signposted Henllys Estate B&B. My workshop is in barn on left.





8 JANE EVANS - TEXTILES

Abercamlais, Cilycwm, Llandovery, Carm., SA20 0SW
What 3 words location: [///baroness.upwards.vocally](http://baroness.upwards.vocally)
m 07817 270967 **e** jane.evans24@btinternet.com
w fabulousfeltings.co.uk **f** Fabulous Feltings **i** fabulousfeltings

Open
10am-5pm
Every day

Inspired by the beautiful Tywi Valley and worldwide travel, I use fine wool and exotic fibres to felt wearable art, wall hangings and 3D sculptures.

Directions: From the A40 in Llandovery take the Cilycwm Road and follow directions to Cilycwm. Cross the Pont Newydd Bridge and after half a mile - where the road bends right to Cilycwm - turn left. After a few hundred yards, Abercamlais - a red brick house with sheep in the garden - will be on your right.



9 SUSAN REAH - PAINTING

Gwynfaes, Rhandirmwyn, Llandovery, SA20 0NG
What 3 words location: [///yoga.chariots.trendy](http://yoga.chariots.trendy)
t 01550 720480 **m** 07498 913915 **e** susan.reah@sky.com
f NewStartArt

Open
10am-5pm
Every day

Watercolours and some mixed media, abstract and semi abstract. Also textiles.

Directions: In Llandovery turn onto the A483 to Builth from the A40. Turn at the fire station on to Cilycwm Road. Farm entrance is then 5 miles on the right, 400m after a red telephone box on the right.



10 GORICA BULCOCK - MIXED MEDIA

Tan y Coed, Rhandirmwyn, Llandovery SA20 0NY
What 3 words location: [///intrigued.able.loudness](http://intrigued.able.loudness)
t 01550 760188 **m** 07767 636242 **e** goricabh@yahoo.co.uk
f Gorica Bulcock **i** goricabh

Open
10am-5pm
Every day

Painting abstracts, landscapes, flora and fauna as well as portraits in various mediums - oil, acrylic, gouache and watercolour.

Directions: From A483 (Builth Rd) turn by the Fire Station into Cilycwm Road - the studio is approximately 7 miles (DO NOT cross over the bridge to Cilycwm)



11 ELAINE JONES - MIXED MEDIA

The Carriage Studio, Llettyrhaflaeth, Llandovery, Carm., SA20 0US
What 3 words location: [///baths.chart.palettes](http://baths.chart.palettes)
m 07973 687076 **e** elainejonesart@gmail.com
w elainejonesart.bigcartel.com **f** elainemjart
i elainejonesart

Open
10am-5pm
Every day

Self taught artist using a variety of mediums to create uplifting and emotive artworks. Inspired by local surroundings and childhood memories. Encouraging creativity for wellbeing.

Directions: Leave Llandovery on the A483 (Builth Wells road). Take the 2nd left by peach cottage, follow the road for approx. 3 miles, pass Owl Barn/Penygaer (we share the same postcodes), come down the road, passing a large shed. Follow the road to the grey farmhouse. Turn and park beside the house. Studio is through the small gate by wood sheds. (Situated in the middle of a ring road which brings you back out on the A483 further on the Builth Road)





12 SARA ARMSTRONG – PAINTING

Hiraeth Gallery, 17 Market Square, Llandoverly, SA20 0AB
What 3 words location: [///waving.acrobats.struts](http://waving.acrobats.struts)
m 07394 503574 **e** sara@hiraethgallery.co.uk
w <https://hiraethgalleryuk.etsy.com> **f** WalesArtGallery
i hiraethgallery

Open
10am-5pm
Every day

Mythical, mystical and magical paintings filled with flora, fauna and people we'd like to meet. Rich colours enhanced by fine detailing and glowing light. At once nostalgic but also new.

Directions: Take the A40 from Llandeilo into Llandoverly. After the left turn

(from Queen's Way) veer left onto Broad Street which turns immediately into Market Square. Hiraeth Gallery will come up on your left. Red chairs, planters and hanging baskets out front. Parking is on the right or in public car park a short distance away.



13 SUBHASH SINGH – PAINTER

Exhibiting with Natalie Singh
Bancynos, Llanwrda SA19 8HE
What 3 words location: [///audible.primesketching](http://audible.primesketching)
m 07984 181924 **e** subhash@artisticvisions.co.uk
w www.subhashsingh.co.uk **f** SubhashSinghArtist
i subhashsingh_artist **x** artisticvision1

Open
10am-4pm
Every day

Having a traditional background from India, painting in egg tempera, oil painting and portraiture, I now paint still life and landscapes from my studio in Wales.

Directions: We are just off the lay-by at Llanwrda. Coming from Llandeilo on the A40, look out for the sign for Llanwrda (before the village) and turn right into the lay-by. When you reach the lane, we're the first property. **Please park in the lay-by.**



14 NATALIE SINGH – PAINTING

Exhibiting with Subhash Singh
Bancynos, Llanwrda, SA19 8HE
What 3 words location: [///audible.primesketching](http://audible.primesketching)
m 07931 477184 **e** nat@nataliesingh.co.uk
w www.nataliesingh.art **f** NatalieSinghArtist **i** nataliesingh_art **x** nataliesingh

Open
10am-4pm
Every day

Oil and gouache paintings with a particular fascination for the effects of light, inspired by my surroundings.

Directions: We are just off the lay-by at Llanwrda. Coming from Llandeilo on the A40, look out for the sign for Llanwrda (before the village) and

turn right into the lay-by. When you reach the lane, we're the first property. **Please park in the lay-by.**



15 CAROLE SPACKMAN - CERAMICS

Crincae, Llanddeusant, Llangadog, SA19 9UP
What3words location: [///duplicate.send.artist](http://duplicate.send.artist)
t 01550 740619 **e** carolepottery@gmail.com
w carolespackmanceramics.co.uk **f** Carole Spackman Ceramics
i carolespackman **X** @carolepottery

Open
10am-5pm
Every day

Useful pottery for kitchen & table with impressionist glazes invoking Welsh wildflower meadows. Wildlife garden sculptures. See my pottery process. Join a workshop. Explore this unique mountain garden & studio.

Directions: From A40, head south, through Llangadog straight onto A4069 towards Brynamman. At closed Three Horseshoes pub, turn left, signed to Red Kite. Drive 2 miles to Twynllanan. In Twynllanan turn right & immediately left, following signs to Church & Youth Hostel. Turn left just past Llanddeusant Church. Lane to Crincae is 200 yards on the right.





16 JONATHAN GARRARD -WOOD

Cilcennen Farm, Rhosmaen, Llandeilo, SA19 6NW

What 3 words location: ///tight.haunt.roost

m 07710 495661

e jonathan.garrard@btopenworld.com

f Jonathan Garrard Ltd i garrardjonathan

Open
10am-5pm
Every day
Late night
Friday 10 – 8

Qualified, experienced cabinet maker, furniture restorer and tutor. I design and make bespoke furniture as well as teaching courses for groups and individuals.

Directions: Coming from Llandeilo on the A483, go straight across roundabout towards Llandovery. Entrance to the courtyard is on the left, on the actual Talley Road junction.



17 ROLAND WALLIS - PAINTING

6 King Street, Llandeilo, SA19 6BA

What 3 words location: ///projects.hounded.warblers

m 07484 316141 e rolanddwallis@gmail.com

i 1959rdw

Open
10am-4pm
Every day

Explorations of colour and texture as a response to people and places.

Directions: On King Street, just off Rhosmaen Street, in the centre of Llandeilo.



18 JOHN MAYO – PAINTING

4A Quay Street, Llandeilo, Carmarthenshire. SA19 6BL

What 3 words location: ///expiring.party.matter

m 07745 067310 e picturemakerjohn@aol.com

w johnmayoart.co.uk f John Mayo i johnmayoart

Open
10am-4pm
Closed Mon,
Tues and
Thurs

I work mainly with oils and acrylic paints. My subject matter is eclectic. My work tends to be illustrative rather than painterly. I live and paint in Llandeilo, Carmarthenshire.

Directions: From Rhosmaen Street, walk past the Church and turn left down Quay Street. It is narrow and steep.



19 ANDREW EVANS – PAINTING

30 Towy Terrace, Ffairfach, Llandeilo, SA19 6ST

What 3 words location: /// bricks.popped.indicates

t 01558 823829 m 07768 571266 e andrewartist@live.co.uk

f The Art of Andrew Evans i andrewevansart

Open
10am-4pm
Every day

Fine art painter working primarily in oils. Also picture framing business.

Directions: Within the village of Ffairfach Towy Terrace.





20 LE'FOOK – MIXED MEDIA

Exhibiting with Cerys Rees

The College Inn, Derwydd Square, Llandybie, Ammanford, SA18 2LX.

Parking at rear

What 3 words location: ///union.widen.sock

m 07875 668662 **e** welcome@theworldoflefook.com

w www.theworldoflefook.com

f theworldoflefook

i theworldoflefook

Open
9am-9pm
Every day

prints, and mixed media paintings.

Directions: We are on the A483 between Llandybie – Llandeilo. We are on the square in Derwydd with parking at the rear.



21 CERYS REES – PAINTING

Exhibiting with Le'Fook

The College Inn, Derwydd Square, Llandybie,

Ammanford, SA18 2LX. Parking at rear

What 3 words location: ///union.widen.sock

m 07734 548123 **e** cerysreesartist@gmail.com

w cerysreesartist.co.uk **f** Cerys Rees Artist

Open
9am-9pm
Every day

I illustrate animals and have been published in books and magazines.

Commissions warmly received.

Directions: We are on the A483 between Llandybie – Llandeilo. We are on the square in Derwydd with PARKING AT THE REAR.



22 JACK PAULSSEN - PAINTING

Llwynonn, Trap, SA19 6TR

What 3 words location: ///clouding.over.agrees

m 07572 390460 **e** jackpaulssen@gmail.com

i jackpaulssen

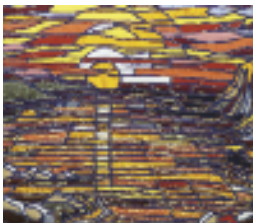
Open
10am - 4pm
every day.

My aim is to be a student of nature, working from life to capture the visual impression; focusing on plein air landscapes, still-life, figure and portraiture.

Directions: Home studio is ½ mile from the centre of Trap. From Derwydd:

turn off main road following signs for Carreg Cennen Castle. After 1

mile, turn left following sign for castle. Look for sandstone farmhouse on the right. Park in front or in the signposted space provided.



23 CYNTH WEYMAN - TEXTILES

Bro Hedyn, 78 Llandybie Road, Ammanford,

Carmarthenshire. SA18 2EE

What 3 words location: ///wording.splints.thigh

m 07772 820313 **e** cynthweyman@gmail.com

w cynthweyman-artistwales.co.uk **f** cynthweymanartistwales

i cynthweymanartistwales

Open daily
10am -
4.30pm.

Contemporary Intaglio Strati textile reliefs from traditional paintings.

Luscious fabrics stitched and cut away to reveal dramatic colourful figurative stories, castles, rocks, sea/riverscapes, botanical - 'my posh silk scarves' too. Siarad Cymraeg hefyd.

Directions: A483 between Llandybie and Ammanford. Opposite Bonllwyn Green's trees. Stiwdio Bro Hedyn

is a grey & white s/d house between 2 pink bus stops. Main road parking or reverse into my driveway.





24 IRENE FUNNELL – GLASS

Penybank, Heol y Capel, Carmel, SA14 7SG
What 3 words location: [///totals.sung.chuckling](http://totals.sung.chuckling)
t 01269 843200 m 07854 433532
e irenefunnellglass@aol.com
w irenefunnell.com f gweithdy gwydr
i irenefunnell

Open every day 10-5 except for afternoons of 29/7, 31/7 & 2/8

My studio is equipped for a number of decorative glass processes including fusing, casting and sandblasting. Visitors are welcome to view my studio and have a go themselves.

Directions: Coming from the direction of Llandeilo on the A476, enter the village of Carmel and take the first right. The studio is on the left at the top of the hill. Coming from Cross Hands on the A476 enter the village of Carmel and turn left into Heol Y Capel on a sharp right hand bend.



25 BRON JONES – PAINTING

Penrhiw Farm, Golden Grove, Carmarthen, SA32 8NE
What 3 words location: [///wonderfully.motivates.rankings](http://wonderfully.motivates.rankings)
m 07766 006016 e bron@bronjonesart.com
w www.bronjonesart.com f bronjonesart
i bronjonesart

Open 10am -5pm
Closed Tues and Wed

I am inspired by the colours and textures of the wonderful landscapes around me. I use acrylics and mixed media to capture the vibrant wildness and that essence of place.

Directions: From the B4300 turn left up the hill to the village of Golden Grove. Go through the village to the top of the hill: there is a T junction on the right at the top (signed for Cefenberrach and Penrhiwgoch); turn right here then immediately left in to the yard. The studio is the building in the yard on the right, with a glass door.



26 PETER JONES – PAINTING

Exhibiting with Sandra Jones
Dan yr Allt, Gelli Aur, Llanarthne, SA32 8LS
What 3 words location: [///used.overhear.locator](http://used.overhear.locator)
m 07792 144369 e peterjonesart7@gmail.com
f Peterjonesart7 i peterjonesart7

Open 10am -5pm
closed THURSDAY

Inspired by local Welsh artists, industrial heritage and the natural environment. I work from my home studio -Stiwdio Danyrallt. Each painting is created with mixed media, acrylic, pastel and graphite.

Directions: From Ffairfach (Llandeilo) turn right onto B4300 towards Carmarthen and continue past the cross junction to Golden Grove on your left and Aberglasney on your right. We are the first house on the left, half a mile from the junction. The studio can be seen from the road (B4300). From Carmarthen take the B4300 to Llandeilo and it's the first turning right, half a mile before the turning to Golden Grove.



27 SANDRA JONES ART – PAINTING

Dan yr Allt, Gelli Aur, Llanarthne, SA32 8LS
What 3 words location: [///used.overhear.locator](http://used.overhear.locator)
m 07875 060815 e sandrajones1547758@gmail.com
f Sandra Jones Art i sandra_jones_art_

Open 10am -5pm
closed THURSDAY

Relatively new to painting and enjoying the journey. I love experimenting with different mediums and styles. Always exciting and joyful and in many cases results are a complete surprise.

Directions: From Ffairfach (Llandeilo) turn right onto B4300 towards Carmarthen and continue straight on through the cross junction to Golden Grove on your left and Aberglasney on your right. We are the first house on the left, half a mile from that junction. The studio can be seen from the road (B4300) From Carmarthen take the B4300 towards Llandeilo and it's the first turning right before the turning to Golden Grove village.





28 VIVIENNE ALBISTON – CERAMICS

Felinfach, Porthyrhyd, Carmarthen, SA32 8PR
What 3 words location: ///dentures.fabric.testers.

t 01267 275610 m 07554 428735
e valbistonceramics@gmail.com
w valbistonceramics.weebly.com
f viviennealbiston
i viviennealbiston

Open
10am-5pm
Every day

I both throw and handbuild with clay. My work is diverse, ranging from porcelain printed cylinders to smoke fired pots and figurative pieces.

Directions: Travel on A48. Take Botanic Gardens turn off onto B4310 towards Porthyrhyd village. One metre in front of T junction take the left turn (Cefneithin). Then take your first left, approx 150yds up the road. Follow lane. As it starts to bend right, my drive is on the left.



29 IRENE LAW – CERAMICS

Faerie-Thyme, Crwbin, Carmarthen, SA17 5DR
What 3 words location: ///tidying.playroom.shredding

m 07534 321120 e faerie-thyme@hotmail.co.uk
w www.thefaepotter.wales f thefaepotter i thefaepotter

Open
10am – 5pm
Closed
Monday and
Tuesday

I have been a potter for the last 40 years. I create functional and quirky decorative pottery for the home and garden, inspired by the beautiful countryside around my home.

Directions: On the B4306. Top end of Crwbin. Travelling east through the village, up the hill, the entrance is on the left. Watch out for the house sign 'Faerie-Thyme' and the POTTERY sign on both sides of the road. Follow the pottery signs down into the yard.



Are you an artist/maker whose studio is within 15 miles of Llandeilo?

If you would like to join the arts trail in 2026 and open your studio to the public...

... please email tywivalleyopenstudios@hotmail.com to register your interest.



2 Justine Burgess

Willow taster sessions: 2 hour taster sessions will be available to book. Please check our website for details.

3 Amanda Stone

Expressive drawing have a go sessions, every day at 11am. Maximum 5 people on first come first served basis. Free. Suitable for all ages and abilities. Using charcoal, pencils and crayon we will have a fun hour exploring and playing.

6 Martin Duffy

I will be running two workshops. First on 28/07/25 Creating a face in clay. 9.30 am -5pm. £85. 31/07/25. Body & Movement. 9.30 am- 5pm. £85. It is possible to combine the two and this would be £160. Materials and tools provided plus tea/coffee. Places limited to 4 on each workshop. Advanced booking only. Please contact Martin on 07988 207924 for more details.

7 Gabriel Hummerstone

11am to 4pm daily. Brief introduction to carving letters/ simple designs in Welsh slate. Suggested donation £15.

8 Jane Evans

'Have a go at Wet Felting' 1 hour sessions, suitable for all ages from 5 upwards, on Monday and Tuesday – to wet-felt a small picture. Cost £12.50 to include all materials. Session times – 11.00, ▶

14.00, 16.00 on both days. Please phone or email to book in advance to avoid disappointment.



11 Elaine Jones

Decoupage workshop – Learn the art of decoupage with fragile papers. Max 3 persons per session. Suitable from 10 years & above. Approx. 2hrs. Booking essential - please email direct. Daily at 5pm. £12.50 per person (includes all materials).



13 Subhash Singh

Painting workshop. One hour. All materials provided. £20. Contact artist to book.



90+ yrs old). No booking needed. Two hourly 1 or 2 person workshops at Stiwdio Bro Hedyn available after the Open Studios event. Can book 12 person sessions for 1-2 days at your own group's venue too.



15 Carole Spackman

Hand built pottery workshops
Choose to hand build a flower, a bird, a bowl, a dish, a mug, a jug, a candle holder, a hare, an owl, a wall name plaque or a green-man/woman. Beginners welcome. Children under 16 must be accompanied by an adult. £13 per hour to include all materials, use of tools & firing of the completed piece. Every day from 10am or from 2pm. Further details & essential booking on www.carolepackmanceramics.co.uk
Email: carolepottery@gmail.com

24 Irene Funnell

Children's 'Have a Go' sessions every morning 10-12. All materials supplied. No need to book. £5 for sandblasting. £10 for fusing. Afternoon sessions for adults to upcycle a glass lantern on 29/7, 31/7 and 2/8. Booking essential. £40 per person



23 Cynth Weyman

I'll be running short free daily demonstrations of Intaglio Strato textile reliefs technique during your visit. This intriguing technique will be revealed (suitable for 16 - ▶

25 Bron Jones

Collaborative painting: on-going throughout the open studios event, all visitors invited to have a go at adding to a group painting. All materials supplied and no need to book. Suitable for all ages.





Visit our website and Facebook and Instagram pages for more information
Ceir mwy o wybodaeth ar ein gwefan ac ar Facebook ac Instagram

www.tywivalleyopenstudios.wales

FACEBOOK • TYWI VALLEY OPEN STUDIOS

INSTAGRAM • TYWI_VALLEY_OPEN_STUDIOS

FREE STUDIO GUIDE
LLYFRYN STIWDIOS AM DDIM

Leaflet • Mike Pugh Print and Display

